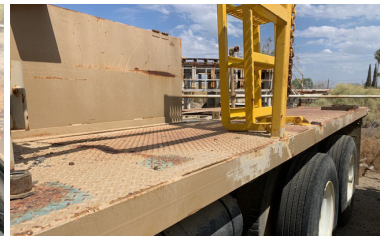




## 1983 MACK MR685 6X4 TRUCK

---





## PRODUCT DESCRIPTION

**ITEM: T-1-23-3**

### **1983 MACK MR685 6X4 TRUCK**

- 6 Cylinder Diesel Engine
- Manual Transmission
- 11R22.5 Front Tires
- 11R22.5 Rear Tires
- Walking Beam Suspension
  - 207 in Wheelbase
  - PTO
- 288,015 Miles

**CALL FOR PRICING & MORE INFORMATION**

## ADDITIONAL INFORMATION

<b>Color</b>	White
<b>Location</b>	Moab Utah
<b>Title</b>	Yes
<b>VIN</b>	1M2K127C3DM006158
<b>Manufacturer</b>	Mack
<b>Model</b>	MR685
<b>Engine Specs</b>	6 Cylinder
<b>Year</b>	1983