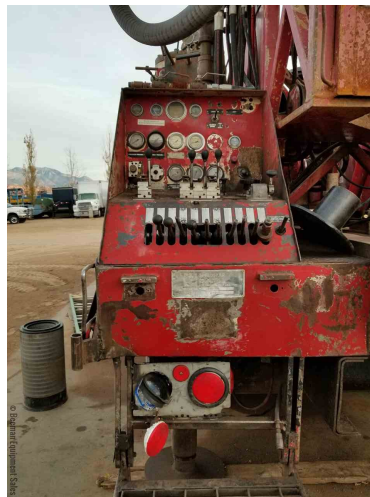
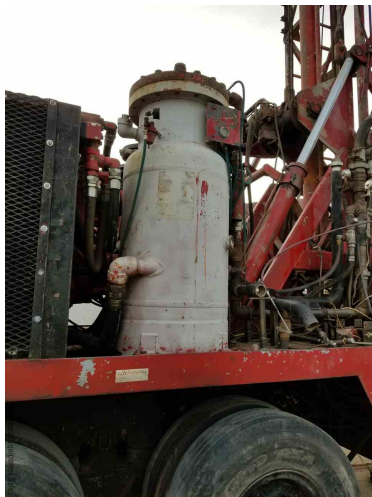
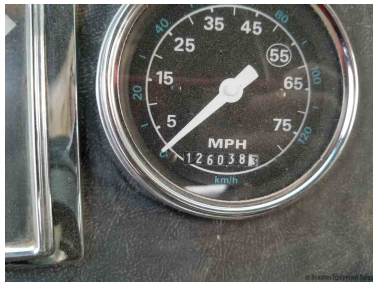
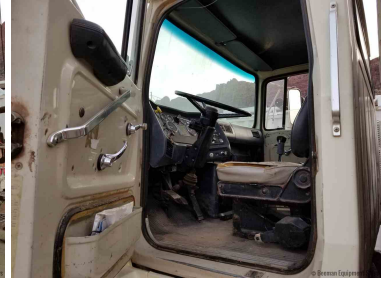
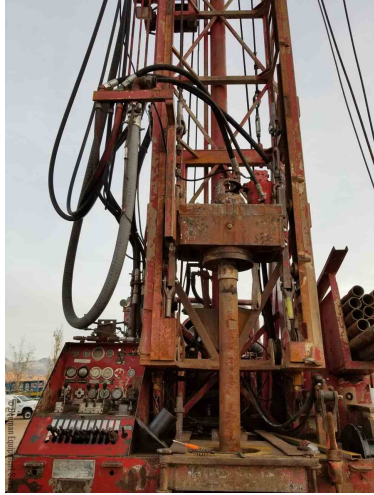




1989 GEFCO SPEEDSTAR 30K DRILL RIG

\$198,500.00







PRODUCT DESCRIPTION

ITEM:R-10-17-95

This **1989 GEFCO Speedstar 30K** Drill Rig is powered by **CAT 3408 Deck** Engine and is mounted on a **Ford L8000** Truck has a CAT 3406 B. Equipped with the following features:

- 30,000 Lbs Capacity
- Newly Rebuilt Sullair 900/300 Air Compressor
 - 4 Cylinder Bean Injection Pump
 - 30,000 Lb Main Winch pull back
 - Jib Arm with 6,000 Lb Winch
 - Pipe Basket
 - 475 HP
 - Roadranger 8LL Transmission
 - 126,038 miles (unverified)
 - 66,000 GVWR
 - Dayton Wheels
- Pipe Basket can handle ~400 ft of 4.5" x 20 Drill Pipe
 - 4 Leveling Jacks
- Approx: Dimensions 33'6"L x 8'W x 13'3"T | 56,000LBS
 - Serial #: 101375
- **New Radiator, new turbo, rebuilt derrick raising cylinders, all fluids & filters changed**

Keep reading for more *detailed information*. [GEFCO Speedstar 30K Spec Sheet](#)

ADDITIONAL INFORMATION

Color	Red, White
Condition	Fair



Industry	Water Well
Location	Moab Utah
Manufacturer	GEFCO
Year	1989
Model	Speedstar 30KD
Mounted On	Truck
Engine Specs	CAT 3408 Deck Engine
VIN	1FDZY90X4KVA46255
Serial Number	101375