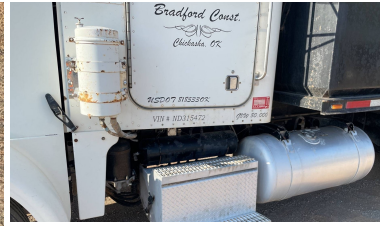
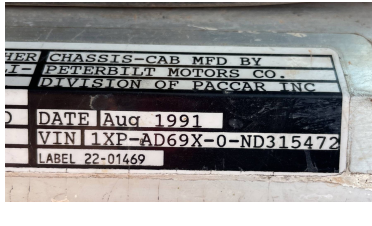




1992 PETERBILT 357 6X4 DRILL TENDER TRUCK

\$21,500.00





PRODUCT DESCRIPTION

ITEM: T-7-22-6

1992 Peterbilt 357 6x4 Drill Tender Truck

- 6 Cylinder 14 L Diesel 410 hp Engine
 - US EPA Label
 - 19974 Engine hrs
- Eaton Fuller 13-Speed Manual Transmission
 - 11R24.5 Front Tires, 11R24.5 Rear Tires
- Hendrickson RT/RTE Series Suspension
 - 243 in Wheelbase
 - 19 ft Long Body

**No guarantees made as to actual hours/miles; the inspections report reflects what can be visually observed!*

CALL FOR MORE INFORMATION !!

SALE PRICE \$21,500

ADDITIONAL INFORMATION

model	357
manufacturer-year	1992
vin	1XPAD69XOND315472
title	Yes
mounted-on	Truck



location

Moab Utah