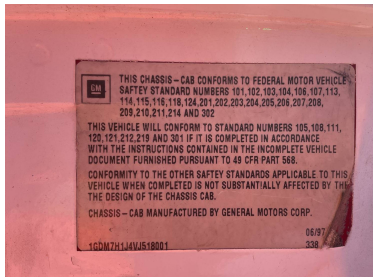




## 1997 GMC C7500 1998 ALTEC BUCKET TRUCK

**\$19,500.00**

---





## PRODUCT DESCRIPTION

**ITEM: T-3-23-9**

### **1997 GMC C7500 1998 ALTEC**

- Cat 3116
- 6 Cylinder 6.6 L Diesel 250 hp Engine
  - 1997 US EPA Label
- 6-Speed Manual Transmission
- 11R22.5, Spring Suspension
  - 174 in Wheelbase
  - 600 lb Capacity
  - Rear Mounted
- Insulated Two-Person Articulated Boom
  - Lower Boom Fiberglass Insert
    - Utility Body
    - A-Outriggers
    - Rear Outriggers
  - 13 ft 6 in x 96 in Bed
    - Pintle Hitch
- MILES: 75,164 (*UNVARIFIED*)

**SALE PRICE \$19,500**

## ADDITIONAL INFORMATION

<b>Manufacturer</b>	GMC, Altec
<b>Year</b>	1997, 1998
<b>Model</b>	C7500
<b>Title</b>	Yes



**VIN**

1GDM7H1J4VJ518001