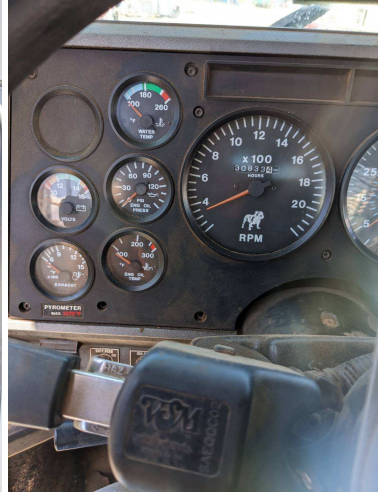


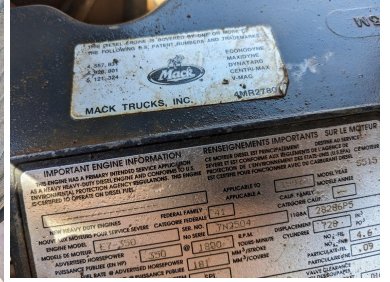
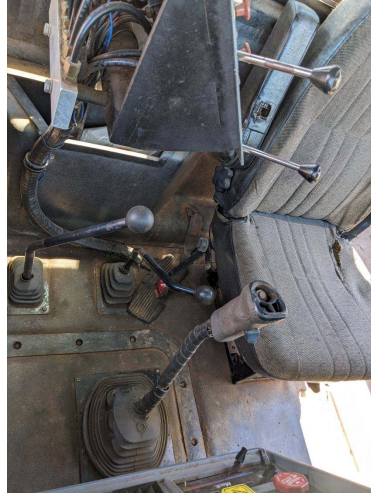
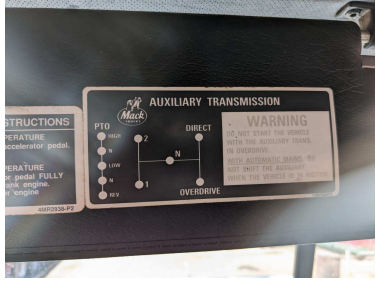


# 1998 MACK RIG UP TRUCK

**\$32,500.00**

---







## PRODUCT DESCRIPTION

ITEM: T-5-24-13

### 1998 Mack Rig Up Truck

- p/b E-7-350-V-MAC
- Maxitorque T2130 18-Spd Trans
  - (2) CHELSEA PTOs
    - 40,000# Rears
  - Dbl Frame w/ 30' Poles
- Rig Up Bed w/ TULSA 70 & 34 Winches w/ Live Pole Winch
  - Reinforced Gin Poles
  - 8-5/8" Rolling Tailboard
- 425/65R22.5 Front & 11R24.5 Rear Tires
  - Alum Budd wheels
  - 40,846 Odometer Miles
    - 28" Wheelbase
    - GVWR 32,000

**SALE PRICE \$ 32,500**

*\*No guarantees made as to actual hours/miles; the inspections report reflects what can be visually observed!*

## ADDITIONAL INFORMATION

<b>VIN</b>	1N2ADD9C8WW005776
<b>Color</b>	White
<b>Location</b>	Moab Utah
<b>Manufacturer</b>	Mack



<b>Engine Specs</b>	Mack E7-350
<b>Year</b>	1998
<b>Model</b>	CL-173
<b>Title</b>	Yes