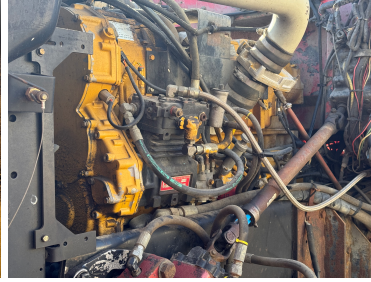




1998 SPEEDSTAR 40K DRILL RIG







PRODUCT DESCRIPTION

ITEM#: R-4-25-76

1998 Speedstar 40K Drill Rig

- P/B Cat 3406 6 Cylinder Diesel 450 hp Engine
 - Eaton Fuller 8LL Manual Transmission
 - Hydraulic Top Drive
 - Mast: Range II -40,000 lbs
 - Single pipe loader
 - 6000 ft-lbs Torque
- **MOUNTED ON 1998 Peterbilt 357 Twin steer truck**
 - (UNVERIFIED) 1679 Engine hrs
 - Engine Brake
 - 36000 lb Front Axle | 46000 lb Rears
 - 72,000 lb GVWR
 - 445/65R22.5 Front Tires, 11R22.5 Rear Tires
 - Dual Steering Boxes
 - Double Frame
 - Rubber over Walking Beam Suspension
 - 300 in Wheelbase
 - Main Winch 40000 lbs
 - Wireline Winch
 - Winch and Jib Boom
- Equipped w/ Coring Assembly and Wire Line Retrieval System

CALL FOR PRICING

ADDITIONAL INFORMATION

Location

Moab Utah



Engine Specs	CAT 3406
Manufacturer	Speedstar
Year	1998
Model	40K
Mounted On	Truck
VIN	1NPALBOX9WD457338
Title	Yes