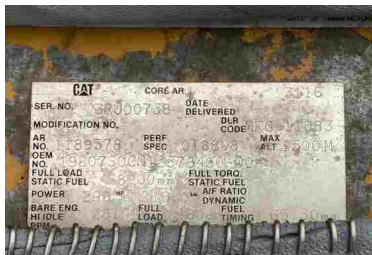




# 1998 STEWART & STEVENSON M1088 MTV 6X6 TRUCK TRACTOR

**\$26,500.00**





## PRODUCT DESCRIPTION

T-8-21-8

### 1998 STEWART & STEVENSON M1088 MTV 6X6 TRUCK TRACTOR

- Low Mileage - 5,737
- Wheelbase: 161.4 in
  - 300HP
  - Drive Type - 6 x 6
  - GVWR - 44,650 lb.
- Towed Load: 63,000 lb
- Engine - Caterpillar 3126 Heavy Duty Diesel, 6 - Cylinder, Fuel Injected, Turbocharged and Aftercooled
  - Transmission - Allison 3070 (MD-D7) Automatic/Select 7-speed, Electronically Controlled
    - Full-Time AWD
- Suspension Front - Parabolic-Tapered Leaf Spring with Coil over Hydraulic Shock Absorbers
- Suspension Rear - Tandem Axles with Parabolic-Tapered Leaf Spring with Hydraulic Shock Absorbers and Stabilizer Bar
  - Central Tire Inflation System
  - Sliding 5th Wheel Operation
    - 395/85R20 Tires
    - Hard Top
  - Truck is in good condition!

**SALE PRICE \$26,500**

<https://youtu.be/T5oSTTn6b2g>

## ADDITIONAL INFORMATION



<b>Weight</b>	44650 lbs
<b>Color</b>	Black, Green
<b>Location</b>	Moab Utah
<b>Manufacturer</b>	Stewart & Stevenson
<b>Year</b>	1998
<b>Model</b>	M1088 MTV
<b>Engine Specs</b>	CAT 6 Cylinder Turbo Diesel Engine
<b>Serial Number</b>	T-2005BAFD