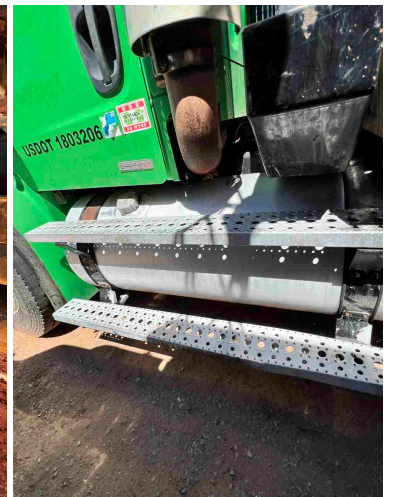
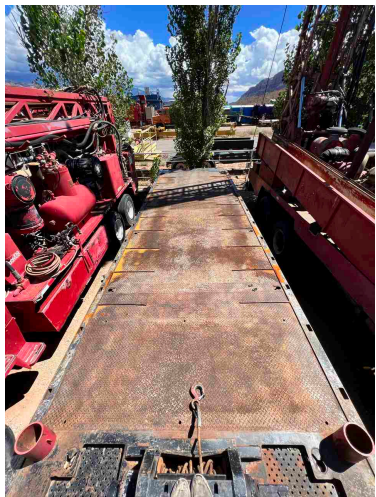
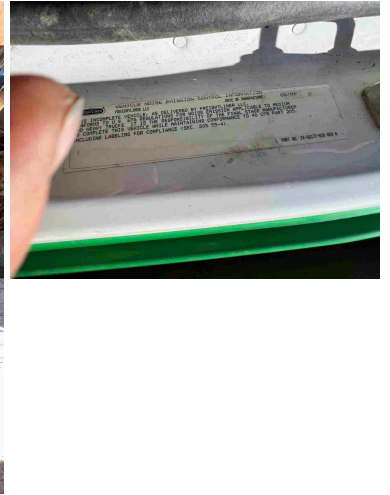
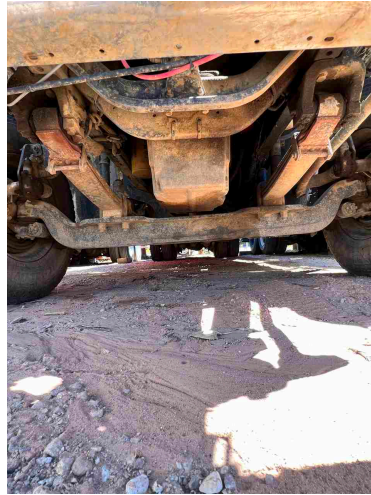
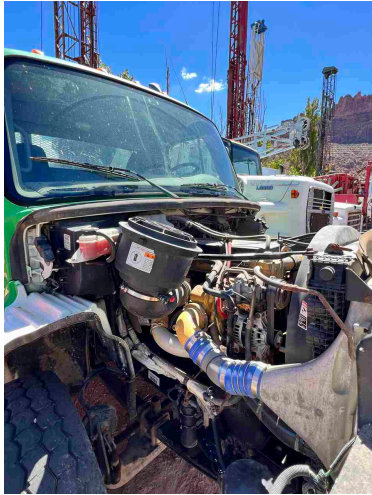
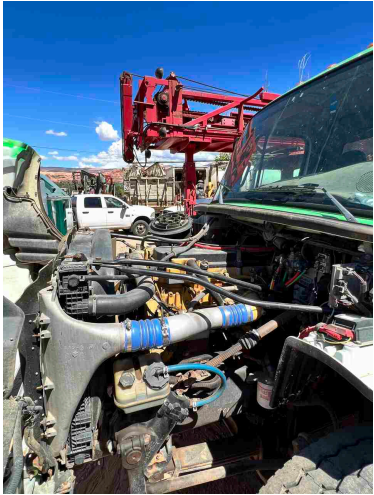
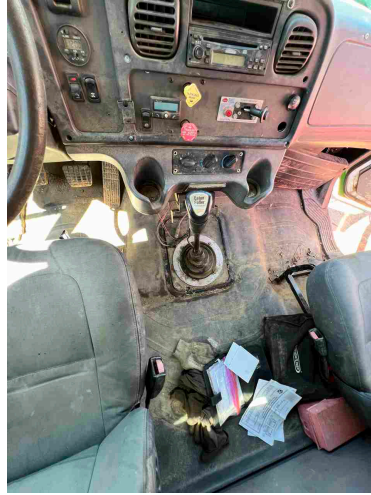




2007 FREIGHTLINER M2 S112 WINCH TRUCK

\$59,500.00







PRODUCT DESCRIPTION

ITEM: T-3-22-14

2007 Freightliner M2 S112 Winch Truck

- 30,000 lb. 28 ft Rolloff
 - Double Frame
 - 56,000 GVWR
 - 256,889 Miles
- Air Ride Suspension
 - 268" Wheel Base
- Ramsey 20,000 LB Hydraulic Winch
 - Break System Type - Hydraulic
 - Drive Type - 6 x 4
- Engine model - Cat C11
 - Horsepower - 430
- Engine Configuration - Inline 6, 4-Stroke-Cycle Diesel
 - Aspiration - Turbocharged Aftercooled (TA)
 - Gross Vehicle Weight - 77200lb
 - Fuel Capacity - 90 gallons
 - Truck is in good condition!

**No guarantees made as to actual hours/miles; the inspections report reflects what can be visually observed!*

SALE PRICE \$59,500

ADDITIONAL INFORMATION

color	Green
manufacturer	Freightliner



model	M2
manufacturer-year	2007
vin	1FVHC5DL67HX84034
title	Yes
location	Moab Utah
Engine Specs	Caterpillar C11 11.1 L