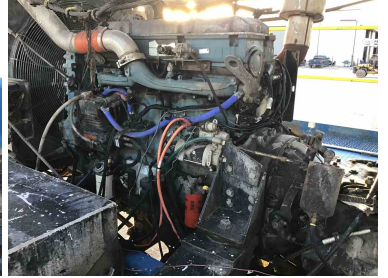




2007 GEFCO SPEEDSTAR 185K DRILL RIG

\$525,000.00





PRODUCT DESCRIPTION

ITEM# 2021-B

2007 GEFCO STAR 185K

- Top Head Drive Hydraulic Drilling Rig
 - Mounted on 5/Axle Kimble Carrier
 - Mast / Derrick Capacity: 185,000 Lbs.
- Powered By: DETROIT SERIES 60 Diesel Engine
 - Fuller Eaton 18 Speed Transmission
 - GEFCO 60' Derrick / Mast
 - GEFCO Top Head Drive w/Shock Sub
 - SGL. Racking Board
 - HPU Unit & Hydraulic Tank w/Cooler
 - (x4) Carrier Lifting Cylinders

Rig Deck Engine 5,848

(x2) Gardner Denver PZ-8 (7-1/2" x 8") Triplex Mud Pumps

- P/B CAT D3508 A Diesel Engine
 - 750 HP.
 - Belt Driven Assembly
- 5000 Lbs. Pulsation Dampner
- MCM 5" x 6" x 11" Charge Pump
 - Master Skidded

Mud Mixing / Suction Tank

- 7'4" W. x 5'H. x 26'L.
- (x2) Compartment Mud Suction Tank w/5'L. Covered Porch
- 5-STAR 5" x 6" x 11" Centrifugal Pump P/B 40 Hp. Electric Motor
 - (x2) 10- Hp. Agitators
 - Mud Hopper
 - Chemical Mixer



- Skid Mounted

Mud Shaker Tank

- (x2) Compartments
- 7'4" W. x 5' H. x 21' L.
- 10' L. Shaker Porch
- Vortex 4' W. Linear Motion Shale Shaker
- Skid Mounted

KOHLER 475W Generator

- p/b DETROIT 12V- 92 Twin Turbo Diesel Engine
- Model: 572RSL40278P - 175kw 475w
- Eaton Electric Panels
- Mounted on 42' L. x 7'6" W. Utility Skid w/ 15' L. x 7' W. Generator House
- 10' L. x 7' W. x 6' H. Fuel Tank
- 8' L. Porch
- GARDNER DENVER EBE 99N 3ohp Rotary Air Compressor w/Air Volume Tank

HYDRIL GK10-5000 Annular BOP

- 11"5M x 24"H Drilling Spool w/ (x2) 4-1/16" Outlets

KOOMEY 4- Station 80 Gallon Closing Unit

- (x8) 10 Gallon Accumulator Bottles w/ Triplex Charge Pump p/b 15hp Electric Motor
- (x2) Air Actuated Charge Pumps
- 11' L. Covered Top w/ 24' L. x 8' W. x 3' H. Junk Box Extention
- Lube Oil Rack / Beaver Slide / Skidded

Crimped Steel Drillers Doghouse

- 24' L. x 7'6" W. (With 6' L. Covered Porch)
- Knowledge Box, Tons of Bench Storage, Parts Shelves
- 19' L. x 8' W. x 7' H. Doghouse Stand

Catwalk / Drill Collar Box / V- Door Ramp

- 36' L. x 7' 6" W. x 2' H.

SUBSTRUCTURE

- (x4) Stiff Legs 7' H. x 10' W. x 10' L. T-Type Substructure w/(x2) 4' W. Folding



Walkways

- 11' W. x 40' L. 2-Piece Rig Base w/Stairs & Safety Rails

Bare Rig Package (Drilling Rig, Substructure, Doghouse) = \$525,000

Complete Package = \$625,000 +/-

<https://youtu.be/O2oPld0ttLo>

ADDITIONAL INFORMATION

Color	Blue, White
Condition	Good
Industry	Environmental, Geothermal, Mineral Exploration, Oil and Gas, Water Well
Location	Western US
Manufacturer	GEFCO
Year	2007, 2010, 2012
Model	185K
Mounted On	Carrier
Engine Specs	Detroit Series 60
Title	Yes
Serial Number	1K91AVHD972208146