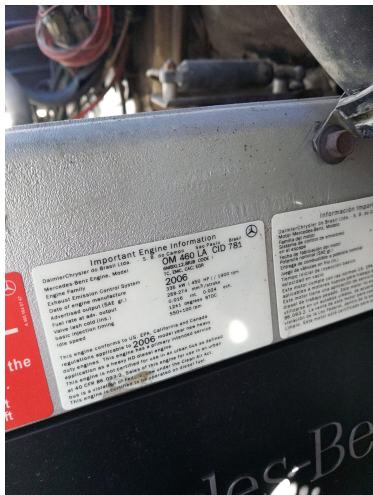




2007 STERLING L9513 BOOM TRUCK

\$67,500.00







PRODUCT DESCRIPTION

ITEM#: T-10-25-28

2007 Sterling L9500 Boom Truck

- Year: 2007
- Make: Sterling
- Model: L9513
- Engine: Mercedes-Benz OM460LA 6 Cylinder 12.8 L Diesel 450 hp Engine
 - Transmission: Road Ranger RT008LL
- Axel: Front- 20,000 LBS | Rear- 23,000, 23,000, 13,200LBS
 - Weight: 34,000 LBS | GVWR: 66,000 LBS
- Miles/ Hours: Engine Hrs: 341.5 | MILES: 4,241 (*UNVERIFIED*)
 - Suspension: Leaf Spring Suspension
- Tire Size: 425/65R22.5 Front Tires, 11R22.5 Rear Tires
 - Wheelbase: 360"
 - Frame: Double
- Approx Dimensions: 40'6" L x 8'8" W x 13'6" T
- *Missing Remote, can still be operated from chair

SALE PRICE \$ 67,500.00

<https://youtu.be/xqYVMA9Z1kM>

ADDITIONAL INFORMATION

Engine Specs

Mercedes Benz 6 Cylinder Diesel Engine



Location	Moab Utah
Manufacturer	Sterling
Year	2007
Model	L9500
Title	Yes
VIN	2FZHAZCV37AV53156