



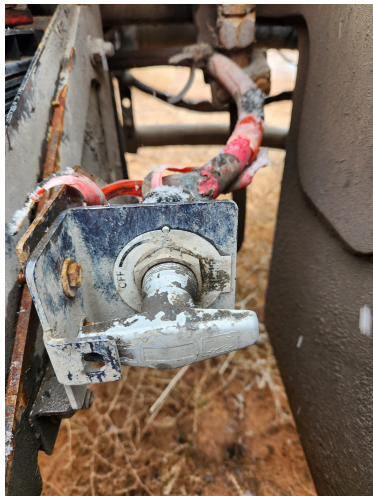
## 2010 AMERICAN LAFRANE CONDOR ROLLOFF TRUCK

~~\$34,750.00~~ Original price was:  
~~\$34,750.00.~~ \$28,500.00 Current  
price is: \$28,500.00.

---









## PRODUCT DESCRIPTION

ITEM:T-4-21-9

### 2010 American Lafrane Condor COE Roll off truck

- Cummins ISL 8.9 L, 365 HP @ 1900 RPM
  - Mileage 58,876
- Allison 4500 RDS Automatic Transmission
  - Hendrickson Haulmaax Suspension
    - Front Tire Size 385/65R 22.5
    - Back Tire Size 11R 22.5
  - RT- 46 160 R - Series Tandem Axel
    - 236" Wheelbase
    - Truck Bed Length '21 "8
    - Truck Bed Width '3 "5 1/2
    - GAWR 58,000lb
- **RIGHT SIDE STEERING WHEEL**
  - \*needs parts on roll off unit

**SALE PRICE \$28,500**

*\*No guarantees made as to actual hours/miles; the inspections report reflects what can be visually observed!*

## ADDITIONAL INFORMATION

<b>Color</b>	White
<b>Condition</b>	Very Good
<b>Engine Specs</b>	Cummins ISL, 8.9 L
<b>Location</b>	Moab, Utah



<b>Manufacturer</b>	LAFR
<b>Year</b>	2010
<b>Model</b>	Condor
<b>Title</b>	Yes
<b>VIN</b>	5SXHNZCY4AR1A0890
<b>Industry</b>	Environmental / Geothermal