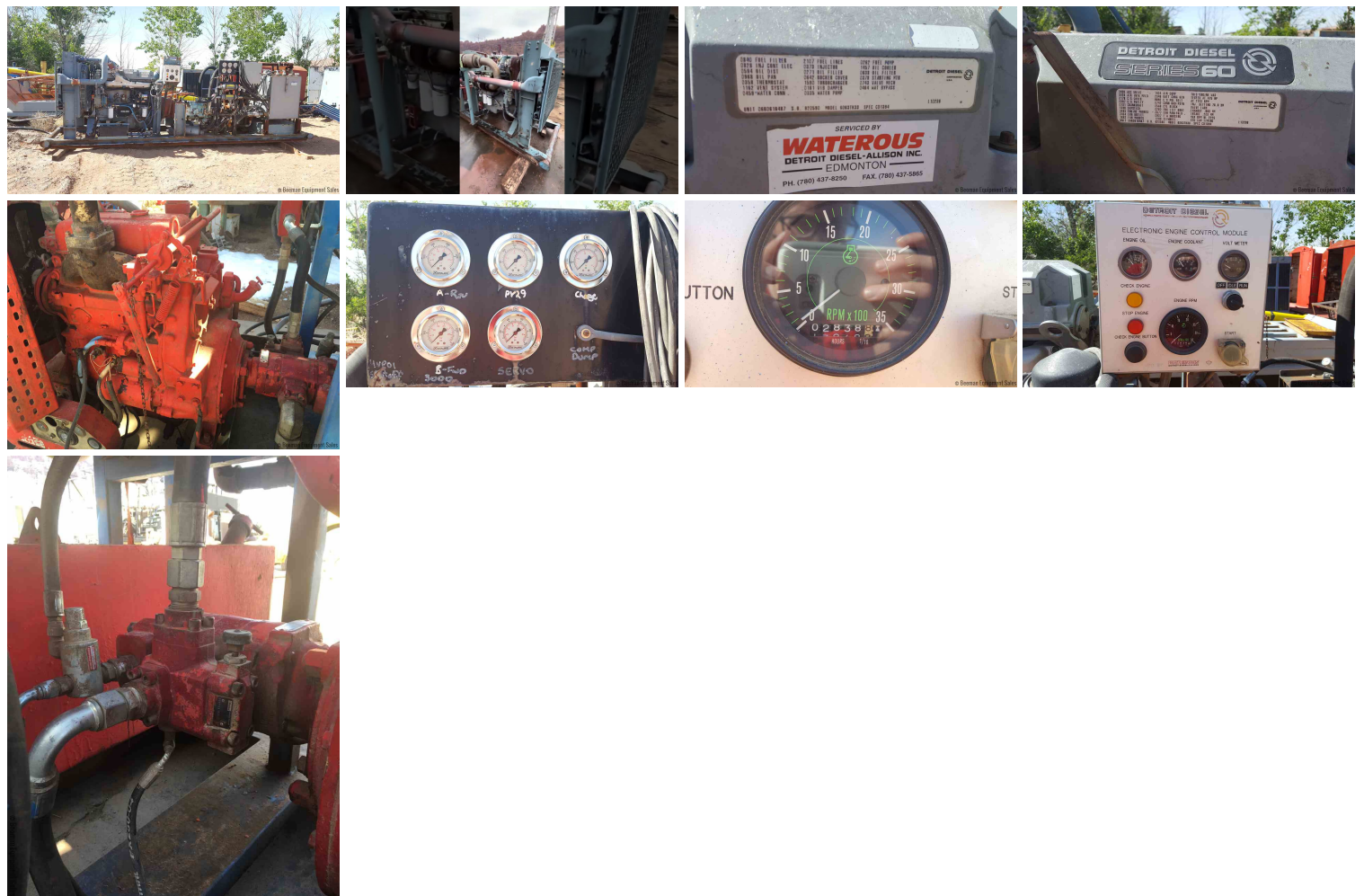




# DETROIT HYDRAULIC POWER UNIT

**\$32,500.00**

---





## PRODUCT DESCRIPTION

### DETROIT HYDRAULIC POWER UNIT

- 2000 Custom Built
- Total Operating Hours 2,838 HRS
- Series 60 Detroit Diesel 6063TK33
  - 55" W x 18'L 83" T
    - 5,000 PSI
  - 5,500 PSI Continuous
    - Intermittent
  - 225 GPM @2,100 RPM
- dimensions: 18'4" Long x 5'Wide x 6'Tall (approx. 12,000 LBS)

SALE PRICE \$32,500

[https://youtu.be/\\_8mdK1EVBRI?si=EyWv\\_SaVE1DY-A7z](https://youtu.be/_8mdK1EVBRI?si=EyWv_SaVE1DY-A7z)