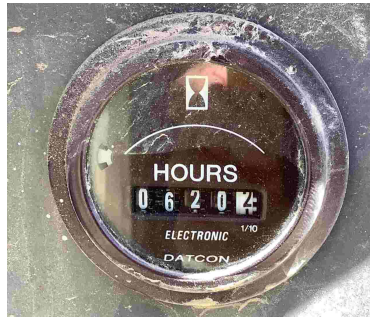
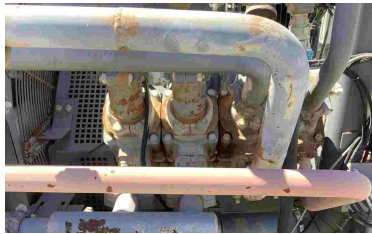




2012 ATLAS COPCO AIR COMPRESSOR & BOOSTER COMBO UNITS

\$38,500.00



CAPACITY CHART
M-85A200
AIR COMPRESSOR
500 SCFM MAXIMUM CAPACITY
2000 PSIG MAXIMUM DISCHARGE
CAPACITY AT VARIOUS RPM

WITH CAPACITY CONTROL VALVE CLOSED
2000 PSIG FOR 84% MAXIMUM DISCHARGE
CAPACITY AT VARIOUS RPM

1800 RPM	1600 RPM	1400 RPM	1200 RPM
600 SCFM	530 SCFM	470 SCFM	400 SCFM
283 L/S	250 L/S	222 L/S	189 L/S

WITH CAPACITY CONTROL VALVE COMPLETELY OPEN
1500 PSIG FOR 84% MAXIMUM DISCHARGE
CAPACITY SCFM AT VARIOUS RPM

1800 RPM	1600 RPM	1400 RPM	1200 RPM
360 SCFM	320 SCFM	280 SCFM	240 SCFM
167 L/S	151 L/S	132 L/S	113 L/S



SR SUPER RADIATOR COILS

CERTIFIED BY SUPER RADIATOR COIL

600 PSI AT 200°F

MAX. ALLOWABLE WORKING PRESSURE

-20°F AT 200 PSI

MIN. DESIGN METAL TEMPERATURE

SERIAL NO. 14999 YEAR BUILT 10

CHASKA, MN 55518





PRODUCT DESCRIPTION

A-5-22-6

2012 Atlas Copco Air Compressor & Booster combo units

- Air Cooler
- Air Dryer
- 2000 psi Working Pressure
 - Direct Drive
- Weight 10,000 +/-
 - 10' TALL
- 600CFM x 2000 PSI
 - M-85A/2000

CALL FOR MORE INFORMATION !!

SALE PRICE \$38,500

ADDITIONAL INFORMATION

Manufacturer	Atlas Copco
Serial Number	USL09111394
Title	Bill of Sale
Mounted On	Skid