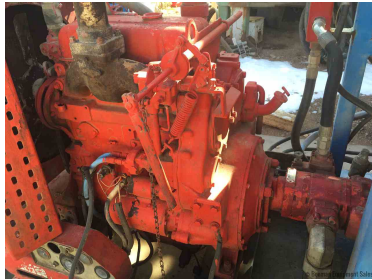
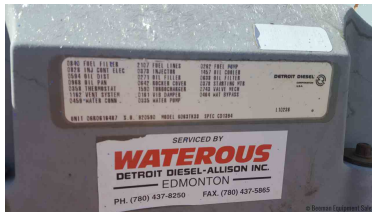
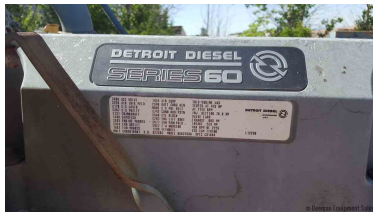




DETROIT HYDRAULIC POWER UNIT

\$22,500.00





PRODUCT DESCRIPTION

Detroit Hydraulic Power Unit

- 2000 Custom Built
- Total Operating Hours 2,838 HRS
- Series 60 Detroit Diesel 6063TK33
 - 55" W x 18'L 83" T
 - 5,000 PSI
 - 5,500 PSI Continuous
 - Intermittent
 - 225 GPM @2,100 RPM
- dimensions: 18'4" Long x 5'Wide x 6'Tall (approx. 12,000 LBS)

SALE PRICE\$ 22,500

[Detroit Hydraulic Power Unit](#)

ADDITIONAL INFORMATION

Color	Blue, Red
Location	Moab Utah
Manufacturer	Detroit
Mounted On	Skid
Engine Specs	Detroit