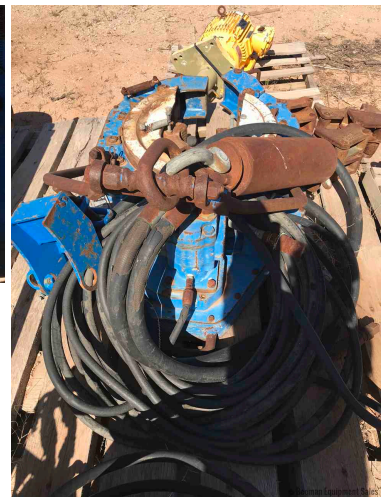
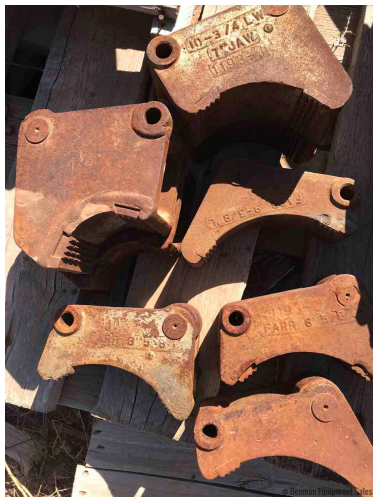
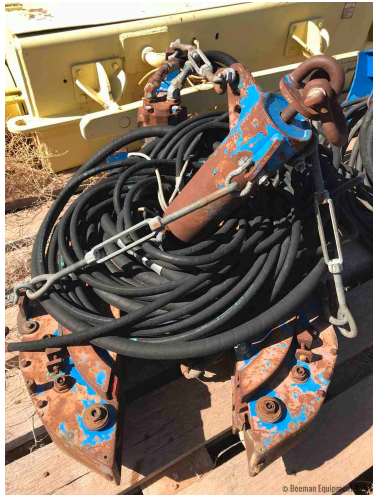




FARR POWER CASING TONGS

\$38,500.00







PRODUCT DESCRIPTION

- Type: Casing Tong
- Size Range: 4 1/2 - 10 3/4
- Serial Number: 12071
- Manufacturing Date: 06/08/2000
- Torque Range at 2200 PSI/15.2 MPA:
 - High Gear: 2,400 ft-lbs/3,254 Nm
 - Low Gear: 12,000 ft-lbs/16,272 Nm
- Maximum RPM at 50 GPM/189 LPM:
 - High: 86 RPM
 - Low: 17 RPM
- Hydraulic Requirements:
 - 50 GPM @ 1,000 PSI
 - 20 GPM @ 2,200 PSI
- Length: 47 inches/119.38 cm
- Overall Width: 31 inches/78.74 cm
- Space Required on Pipe: 8 inches/20.32 cm
- Maximum Elevator Diameter: Unlimited (Tong comes off pipe)
- Center Line of Pipe to Center Line of Anchor Handle: 34 inches/86.36 cm
- Weight (Approximate): 1,050 lbs./476.7 kg

ADDITIONAL INFORMATION

Weight	1050 lbs
Color	Blue
Location	Moab Utah
Manufacturer	FARR
Year	2000



Model

LW 10750