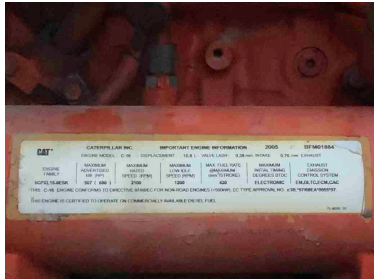




FOAM UNIT

\$127,500.00





PRODUCT DESCRIPTION

ITEM: A-11-19-25

Foam Unit

- Has 1 Sullair 1150 CFM @ 350 PSI with CIP Boosters
 - powered by Cummins x15 engines.
- One Kerr 3300 triplex mist pump and tanks for fuel & chemicals
 - mounted on a 45' trailer
- Foam Unit has low hours approx. 2,100 hours
 - **FOAM UNIT SPEC SHEET**
 - **Sale Price \$ 127,500.00**

ADDITIONAL INFORMATION

Color	Orange
Condition	Good
Location	Moab Utah
Manufacturer	AWDE
Year	2006
Model	ID
Mounted On	Trailer
Title	Yes
VIN	1W9FH45296E285204