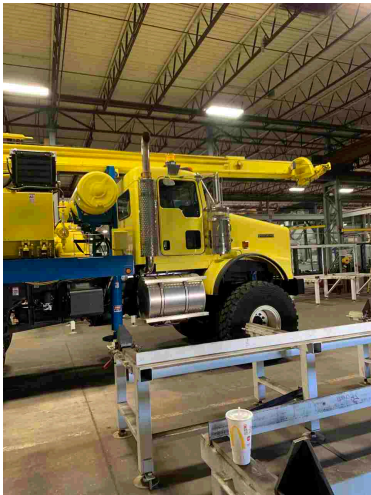




2015 GEFCO STARDRILL 300HD DRILL RIGS (UNUSED)

\$645,000.00







PRODUCT DESCRIPTION

2015 GEFCO Stardrill 300HD Drill Rig (UNUSED)

- Rig is mounted on a New Kenworth T-800 6X6 Truck. With a wheelbase of 4,500 mm + 1524mm (to allow for tire deflation). G.C.W. 72,600 lbs
 - 2= Custom Gefco SD300 Water Well Drilling Rigs
 - Direct Circulation Rig with Mud & Air Drilling Applications
 - Mounted on Kenworth T-800 Truck 6X6
 - Cummins ISX 500 rated at 525 hp (**NON- EMISSION COMPLIANT**)
 - Transmission: Fuller 10-Speed with internal oil cooler
- Gear type heavy duty PTO power gear transfer for transferring truck engine power to the hydraulic pump & air compressor
 - 4 Hydraulic Leveling Jacks
 - 12" Square tube mast with 60,000 lbs capacity
- Free height under Jib Boom 36' 6" can handle 4.5m or 6.0m or 2 4.5m rods at a time
 - Gardner Denver FXG 5X6 duplex mud pump
 - Max. pullback capacity 24,000 LBS
- Atlas Copco model ORV-10 rotary screw compressor (1000CFM x 365PSI)
 - 3 Cylinder Water Injection Pump
 - Down hole hammer oiler
 - Single pipe loader & pipe spinner & breakout wrench
 - Comes with rig lighting
- Atlas Copco model ORV-10 rotary screw compressor (1000CFM x 365PSI)
 - 12 Ton Hydraulic Winch
- 12" Square tube mast with 60,000 lbs MAX capacity, Adjustable Jiv Boom
 - Gardner Denver FXG 5X6 duplex mud pump
 - Transmission: Fuller FRO16210C 10-Speed
 - VIN: 1NKDL40X5FR448329
 - Rig Serial #: 90766 2-1NKDL40X5FR448329 |
- **SPEC SHEET MORE YOUTUBE VIDEOS ON RIG CALL FOR PRICING!!** Total weight per unit 58,200 LBS
 - YOUTUBE CLIPS



ADDITIONAL INFORMATION

Color	Blue, Yellow
Condition	Very Good
Industry	Environmental, Geothermal, Mineral Exploration, Water Well
Location	Moab Utah
Manufacturer	GEFCO
Year	2015
Model	Stardrill 300HD
Mounted On	Truck
Engine Specs	Cummins ISX 500 Export electronic diesel engine rated at 525 HP (NON-EMISSION COMPLIANT)
VIN	1NKDL40X5FR448329
Title	Yes