

Hydraulic swing around jib
with hydraulic extension

12" tube mast
22' to 26' stroke

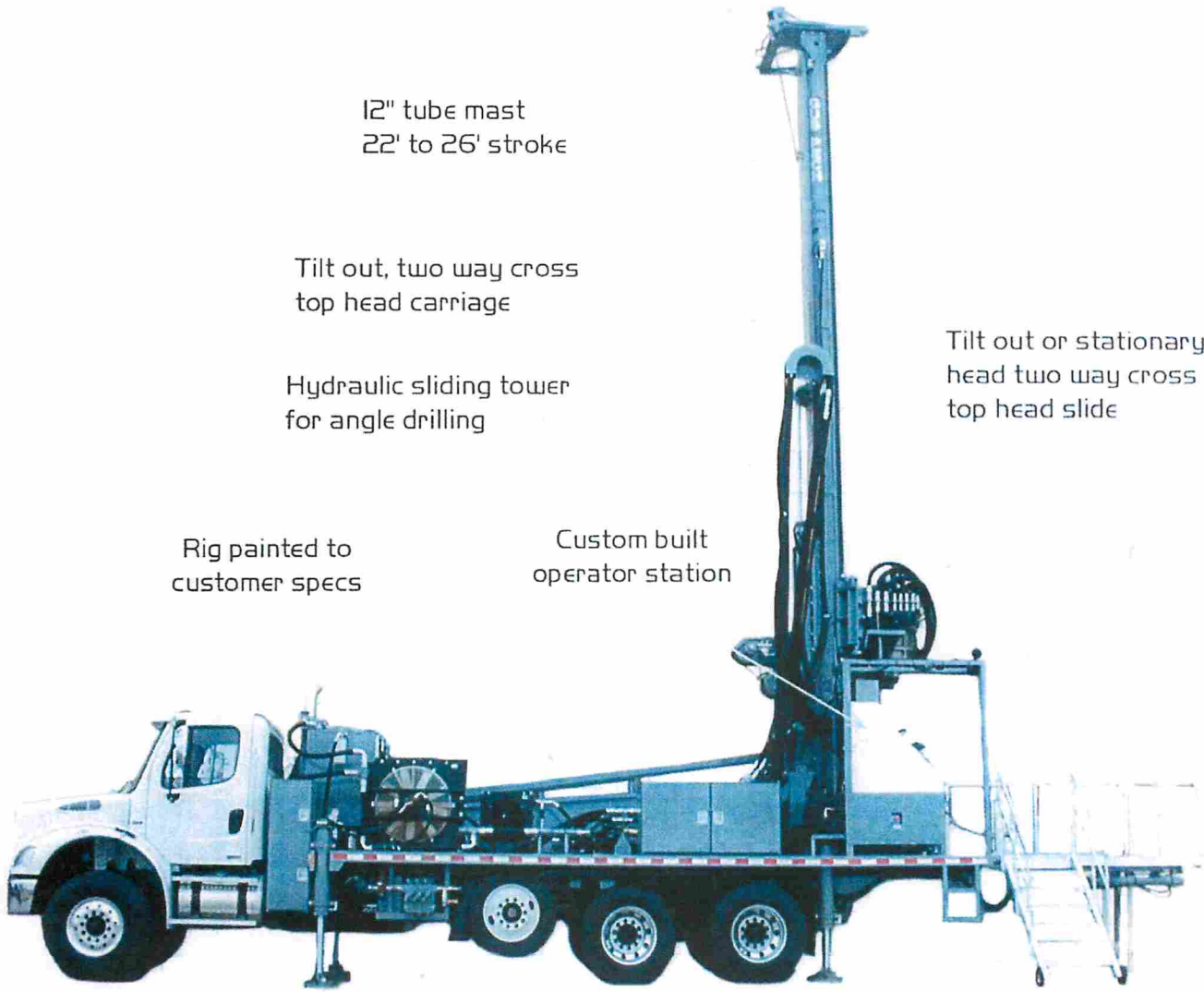
Tilt out, two way cross
top head carriage

Hydraulic sliding tower
for angle drilling

Tilt out or stationary
head two way cross
top head slide

Rig painted to
customer specs

Custom built
operator station

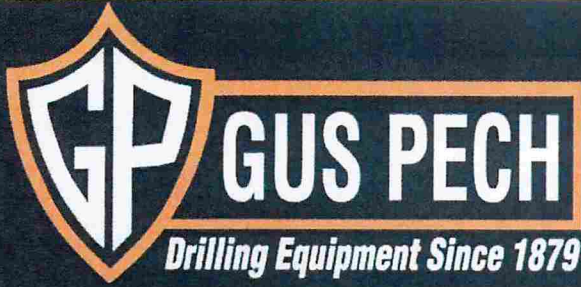


Choice of mud pump

Fold down aluminum
work platform

(Customizing & other options obtainable.)

BRAT-A-SONIC



1480 Lincoln Street SW
 PO Box 96 • Le Mars, Iowa 51031
 712.546.4145 • 800.383.7324
 Fax: 712.546.8945
 guspech@guspech.com

MODEL	STROKE	HTZ	PULLDOWN	PULLBACK	MAST
BRAT-A-SONIC	22 ft-26 ft	0-180	18,412 lb.s	24,537 lbs	60,000 lbs

FEATURES

- Sonic head of customer's choice
- 12" tube mast
- Hydraulic slide base
- Aluminum work platform or stands
- Two-speed winches
- Single station control console
- Feed control system
- Cross head slide with Tilt head carriage
- Transfer case from truck engine or diesel power unit
- Break out wrench system with 14" opening, 3" float and rod spinner
- Two-speed, cable, hydraulic cylinder operated pulldown/pullback drill system
- Bean injection pump 37 gpm/1000 psi (std)
- Hydraulic swing around jib with hydraulic extension
- 4 point hydraulic outrigger system with rear hydraulic wiggle tail
- Hydraulic sliding tower for angle drilling

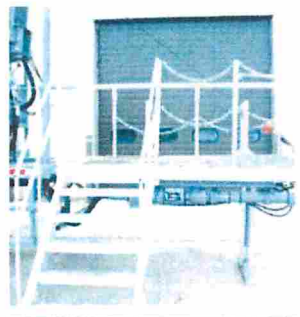


OPTIONS

- Wire line winches
- Choice of mud pumps
- Positive kill emergency shut down for methane applications
- Stationary drill rod carrying rack
- Angle drilling system
- Mud mixing tub with hydraulic operated mixer
- Hydraulic powered water/foam injection pump
- Tool boxes



Break out wrench system with rod spinner



Aluminum Work Platform



Tilt out carriage for all types of Sonic heads

Tandem axle truck, trailer, skid, or track mounted • Customizing obtainable