

ROTATING RIGHT

MODEL 8-P-80 TRIPLEX MUD PUMP

NOV NATIONAL OILWELL VARCO

National Oilwell Varco's 8-P-80 Mud Pump is rated at 800 input horsepower (597 kw) at 160 strokes per minute, with a 8 1/2-inch (216 mm) stroke.

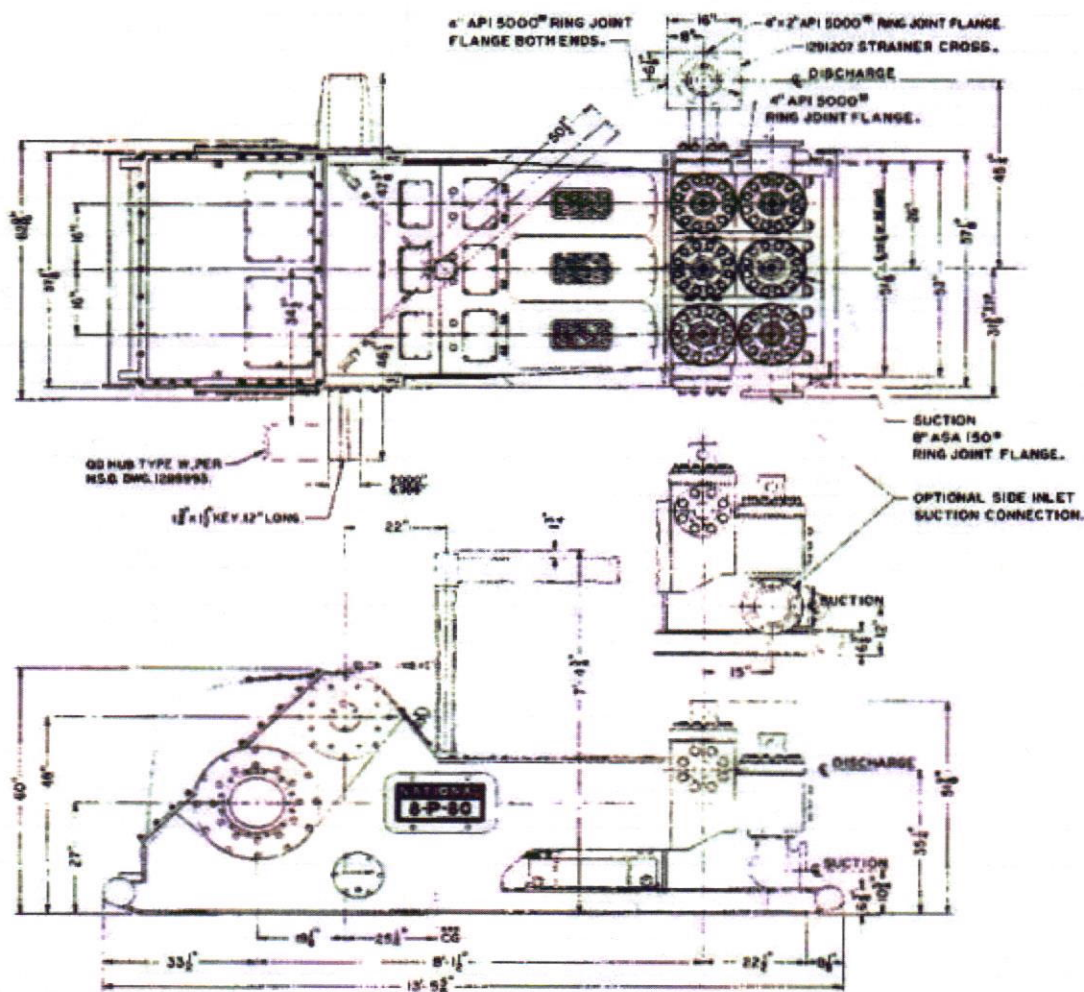
Specifications	
Dimensions	
Height, floor to center of front inlet suction, inches (mm)	10 3/4" (273)
Height, floor to center of discharge, inches (mm)	35 1/4" (895)
Overall length over skids, inches (mm)	161 5/8" (4105)
Width over frame, inches (mm)	62 9/16" (1589)
Width over pinion shaft, inches (mm)	93 7/8" (2384)
Height, floor to top of gear case, inches (mm)	60" (1524)
Height over fluid cylinders, inches (mm)	51 7/8" (1318)
Weight-complete, less sheave, lbs. (kg)	26,970 (12,235)
Fluid Connections	
Suction connection	8" ASA-150 lb. R.J. flange
Discharge connection, cross	4" API-5000 lb. R.J. flange
Capacity Data	
Maximum liner bore, inches (mm)	6 1/4" (158.8)
Stroke, inches (mm)	8 1/2" (215.9)
Maximum input horsepower (kW)	800 (597)
Rated pump speed, spm	160
Pinion speed, rpm	394
Hydrostatic test pressure of fluid cylinders, psi (kg/cm ²)	10,000 (703)
Mechanical Data	
Fluid cylinder	Steel, 2 piece interchangeable modular design
Valves, API number	MOD. 6
Valve seats	Bottom shouldering, modified for high pressure
Piston rod-piston connection	Piloted and shouldered, National CB-4
Piston rod-intermediate rod connection	Piloted and shouldered, metal-to-metal lock
Type of gears	Relieved herringbone
Gear ratio	2.463:1
Gear and pinion	Through hardened alloy
Type of crosshead pin	Tapered
Number and type of pinion shaft bearing	2 self aligning roller
Number and type of main bearing	2 double row tapered roller
Number and type of crosshead bearing	3 double row needle
Number and type of crankshaft-connecting rod bearing	3 cylindrical roller
Double extension on pinion shaft, inches (mm)	7" Dia. x 17" Long (177.8 x 431.8)
Sprocket with QD Hub Type S-Dual Electric Motor Drive (Drive sprocket 1200 RPM max.)	Two- 75T 1 1/2" pitch quint.
Ind. or rig drive-drive sprocket 1100 rpm max.	75T 1 1/2" pitch octuple
Sheave, QD Hub Type S	53" OD 18-8V Section belts / 52" PD26-D Section Belts

Performance Data

Liner size, inches (mm)		6-1/4" (158.8)	6" (152.4)	5-1/2" (139.7)	5" (127.0)	4-1/2" (114.3)	4" (101.6)
Max. Discharge Pressure, psi (kg/cm2) with high pressure Fluid End***		2280 (160.3)	2470 (173.7)	2940 (206.7)	3560 (250.3)	4395 (309)	5000 (351.5)
Pump Speed spm	Input HP	Hyd.* HP, HP	GPM* (LPM*)	GPM (LPM)	GPM (LPM)	GPM (LPM)	GPM (LPM)
160**	800**	720	542 (2051)	500 (1890)	420 (1588)	347 (1313)	281 (1063)
140	700	630	474 (1795)	437 (1654)	367 (1390)	303 (1149)	246 (930)
120	600	540	406 (1538)	375 (1418)	315 (1191)	260 (984)	211 (797)
100	500	450	339 (1282)	312 (1182)	262 (993)	217 (820)	176 (665)
80	400	360	271 (1027)	250 (945)	210 (794)	173 (656)	140 (532)
Volume/Stroke, gal. (Liters)		3.386 (12.820)	3.121 (11.815)	2.622 (9.927)	2.167 (8.204)	1.755 (6.645)	1.387(5.250)

* Based on 90% mechanical efficiency and 100% volumetric efficiency

** Rated maximum input horsepower and speed



Head Office:

6120 Davies Road
Edmonton, AB
T6E 4M9

Phone: (780) 485-2010 • Toll Free: (866) 707-7867

Fax: (780) 485-1938

• Calgary • Drayton Valley • Lloydminster

www.rotatingright.com

